



Product Service

# CERTIFICATE

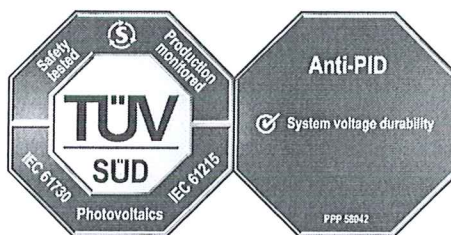
No. Z2 15 09 60191 037

**Holder of Certificate:** **BYD COMPANY LIMITED**

No.1, Yan'an Road, Kuichong, Longgang District  
518119 Shenzhen City, Guangdong  
PEOPLE'S REPUBLIC OF CHINA



**Certification Mark:**



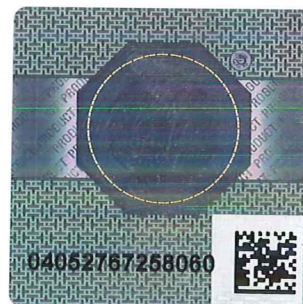
**Product:**

**Crystalline Silicon Terrestrial Photovoltaic (PV) Modules  
(Poly-crystalline Silicon Photovoltaic (PV) Module)**

The product was tested on a voluntary basis and complies with the essential requirements. The certification mark shown above can be affixed on the product. It is not permitted to alter the certification mark in any way. In addition the certification holder must not transfer the certificate to third parties. See also notes overleaf.

**Test report no.:** 682901303804

**Valid until:** 2020-09-07



**Date,** 2015-09-10

*Harry Shubo Zhang*  
(Harry Shubo Zhang)

Page 1 of 3



## CERTIFICATE

No. Z2 15 09 60191 037

**Model(s):**

BYDxxxP6-36 (xxx=240-310); BYDxxxP6C-36 (xxx=240-315);  
BYDxxxP6-30 (xxx=200-255); BYDxxxP6C-30 (xxx=200-260);  
BYDxxxP6-27 (xxx=180-230); BYDxxxP6C-27 (xxx=180-235).  
xxx: in step of 5  
See Page 3 for model details.

**Parameters:**

Rated output power at STC:	See page 3 for details
Application class:	Class A
Max. system voltage:	1000 V d.c.
Fire safety class:	Class C
Test Laboratory:	Yangzhou Opto-Electrical Products Testing Institute No. 10 West Kaifa Road, Yangzhou, 225009 Jiangsu, P. R. China
Construction:	Framed, with Junction box, Cable and Connectors
PID test condition:	± 1000 V d.c., 96 h, 85% RH, 85 °C

**Tested according to:**

IEC 61215(ed.2)  
IEC 61730-1(ed.1);am1;am2  
IEC 61730-2(ed.1);am1  
PPP 58042A:2012

**Production Facility(ies):**

85342, 72759, 87011, 78666, 90968



Product Service

# C E R T I F I C A T E

No. Z2 15 09 60191 037

Model	Rated output power at STC
BYDxxxP6-36 (xxx=240-310, in step of 5);	240 W, 245 W, 250 W, 255 W, 260 W, 265 W, 270 W, 275 W, 280 W, 285 W, 290 W, 295 W, 300 W, 305 W, 310 W
BYDxxxP6C-36 (xxx=240-315, in step of 5);	240 W, 245 W, 250 W, 255 W, 260 W, 265 W, 270 W, 275 W, 280 W, 285 W, 290 W, 295 W, 300 W, 305 W, 310 W, 315 W
BYDxxxP6-30 (xxx=200-255, in step of 5);	200 W, 205 W, 210 W, 215 W, 220 W, 225 W, 230 W, 235 W, 240 W, 245 W, 250 W, 255 W
BYDxxxP6C-30 (xxx=200-260, in step of 5);	200 W, 205 W, 210 W, 215 W, 220 W, 225 W, 230 W, 235 W, 240 W, 245 W, 250 W, 255 W, 260 W
BYDxxxP6-27 (xxx=180-230, in step of 5);	180 W, 185 W, 190 W, 195 W, 200 W, 205 W, 210 W, 215 W, 220 W, 225 W, 230 W
BYDxxxP6C-27 (xxx=180-235, in step of 5).	180 W, 185 W, 190 W, 195 W, 200 W, 205 W, 210 W, 215 W, 220 W, 225 W, 230 W, 235 W