



## Electrical Characteristics at Standard Test Conditions (STC)

Module Type	CSUN 275-60P	CSUN 270-60P	CSUN 265-60P	CSUN 260-60P	CSUN 255-60P
Maximum Power - P <sub>mpp</sub> (W)	275	270	265	260	255
Positive Power Tolerance	0~3%	0~3%	0~3%	0~3%	0~3%
Open Circuit Voltage - V <sub>oc</sub> (V)	38.0	37.9	37.7	37.6	37.5
Short Circuit Current - I <sub>sc</sub> (A)	9.15	9.08	9.01	8.94	8.92
Maximum Power Voltage - V <sub>mpp</sub> (V)	30.9	30.7	30.5	30.3	30.1
Maximum Power Current - I <sub>mpp</sub> (A)	8.91	8.80	8.69	8.58	8.47
Module Efficiency	16.94%	16.63%	16.32%	16.01%	15.70%

Electrical data relates to standard test conditions (STC): irradiance 1000W/m<sup>2</sup>; AM 1.5; cell temperature 25°C measuring uncertainty of power is within ±3%. Certified in accordance with IEC61215, IEC61730-1/2 and UL 1703

## Electrical Characteristics at Normal Operating Cell Temperature (NOCT)

Module Type	CSUN 275-60P	CSUN 270-60P	CSUN 265-60P	CSUN 260-60P	CSUN 255-60P
Maximum Power - P <sub>mpp</sub> (W)	211	198	195	192	188
Maximum Power Voltage - V <sub>mpp</sub> (V)	28.4	28.3	28.2	28.1	28.0
Maximum Power Current - I <sub>mpp</sub> (A)	7.10	7.01	6.92	6.82	6.72
Open Circuit Voltage - V <sub>oc</sub> (V)	35.8	35.5	35.2	34.9	34.6
Short Circuit Current - I <sub>sc</sub> (A)	7.35	7.30	7.25	7.20	7.16

Electrical data relates to normal operating cell temperature (NOCT): irradiance 800W/m<sup>2</sup>; wind speed 1 m/s; cell temperature 45°C; ambient temperature 20°C measuring uncertainty of power is within ±3%.

## Temperature Characteristics

Voltage Temperature Coefficient	-0.292%/K
Current Temperature Coefficient	+0.045%/K
Power Temperature Coefficient	-0.408%/K

## Maximum Ratings

Maximum System Voltage (V)	1000
Series Fuse Rating (A)	20
Reverse Current Overload (A)	27

## Mechanical Characteristics

Dimensions	1640 × 990 × 35 mm
Weight	18.3 kg
Frame	Anodized aluminum profile
Front Glass	White toughened safety glass, 3.2 mm
Cell Encapsulation	EVA (Ethylene-Vinyl-Acetate)
Back Sheet	Composite film
Cells	6x10 polycrystalline solar cells (3BB or 4BB 156 X156mm)
Junction Box	Rated current ≥ 12A, IP ≥ 65, TUV&UL
Cable	Length 900 mm, 1 × 4 mm <sup>2</sup>
Connector	MC 4/ compatible with MC 4

## Packaging

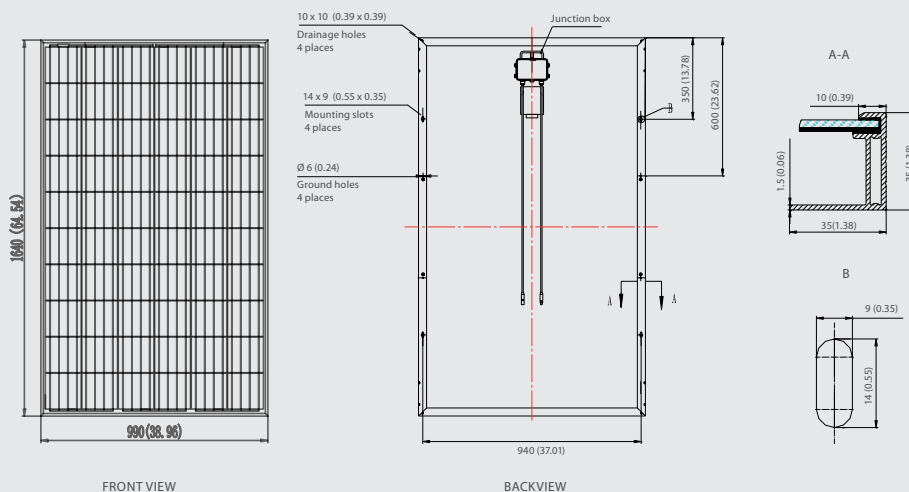
Container 20'	360 pcs.
Container 40'	840 pcs.
Container 40'HC	910 pcs.

## System Design

Temp. Range	-40°C to +85°C
Hail	max. diameter of 25mm with impact speed of 23m/s
Max. Capacity	Snow 5400 Pa, wind 2400 Pa
Application Class	A
Safety Class	II

## Dimensions

Note: mm (inch)



## IV-Curves

